



*The ideal solution for preventing costly accidents in slippery areas*

**STAIR NOSINGS · SAFEPLATES · LADDER RUNG COVERS**



[www.advanceantislip.com](http://www.advanceantislip.com)

# CONTENTS

Company Profile	3
Product Information	6
Stair Nosings	7
Stair Nosings – 1428 Range	8
Ladder Rung Covers	9
Safeplates	10
Antislip Tapes	11
Grating Tread Stair Nosings	12
Grating Antislip Strips & Safeplates	13
Conveyor Channel Cleats	14
Standard Grating Product Design	15
Technical Specifications	16
Higher Visibility	18
Colour Selector	19
Capability Statement	20
Mission & Quality Statement	21
Work Health & Safety (WHS) Policy Statement	22
Environmental Policy Statement	23

# COMPANY PROFILE



## ABOUT US

Advance Anti-Slip Surfaces Pty Ltd is a leading Australian manufacturer of antislip products. A one hundred percent Australian owned and operated company with a long-term commitment to ensure that Australia develops as a centre for excellence in antislip products.

The company began as a family business in 1989. Since then, we have maintained a loyal following by our customer base which is testament to our people and the quality of our product.

Since its inception, Advance Anti-Slip has always had a strong commitment to sourcing the highest quality materials to ensure unequalled performance, reliability and durability.

To ensure continuing quality, greater control of the manufacturing process and prudent investment, the creation of Advance's own production, research and development facility became essential. Such a centre was established in the Australian suburb of Glen Waverley, Victoria.

Advance's success has been achieved by building long term relationships with its customers, by maintaining the highest possible levels of responsiveness, reliability, quality and service, combined with the ability to supply a Class One product on time and at the most cost-effective level.



***Our cost effective nonslip products keep people safe, reduce stress and lowers operating costs.***

# COMPANY PROFILE

## ADVANCE COMPANY PHILOSOPHY

**Advance Anti-Slip Surfaces Pty Ltd has identified three main areas as the essence of its corporate philosophy.**

### 1. CONTINUAL PRODUCT DEVELOPMENT

Advance maintains its focus by, investing in Research and Development, source the highest quality materials available, and in upgrading the production facility to continually improve manufacturing standards and processes, in order to maintain the highest possible quality antislip products available in the market place.

### 2. CUSTOMER FOCUS

We consult with our customers to determine their specific requirements in order to provide the most appropriate non-slip product solution that meets their needs.

### 3. QUALITY ASSURANCE

Ensuring strict levels of quality assurance for any product manufactured or distributed by Advance Anti-Slip Surfaces.

Our Guaranteed Service Standards recognise the importance of post-sale service, maintenance and support. Advance Anti-Slip is committed to maintaining its excellent levels of high quality.

## CLASS 1 QUALITY DISTINCTION

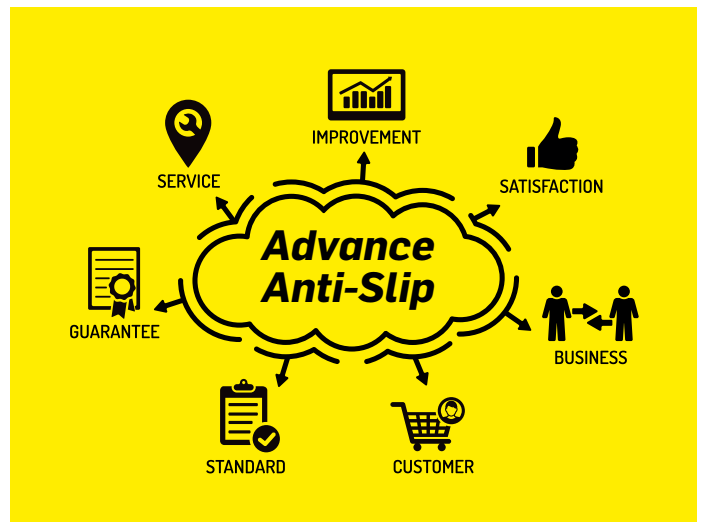
Advance Anti-Slip Surfaces only produces an extremely durable and robust Class 1 ready to install, metal backed antislip product at its Australian manufacturing facility, so that when you purchase our products, you're assured that the resin and aggregate surface will not degrade, delaminate or dislodge in any way.



## ADVANCE DESIGN PHILOSOPHY

**The Advance design philosophy:**

- Design high quality, cost effective products that meet the demanding needs for antislip products in all industry sectors.
- The real needs of the customer have to be addressed at all stages of the design process. Advance Anti-Slip actively seeks input from the marketplace as to their requirements.
- All Advance Anti-Slip products must reflect the performance and quality requirements of the customer for today and the future. This is incorporated into the design rationale of the Research and Development Team.
- Product development must take into account the company philosophy of providing the "Total Cost of Ownership Solution"



**Advance's commitment to quality in both materials and service applies for all products.**

## RESEARCH AND DEVELOPMENT

Advance Anti-Slip is committed to continued Research and Development. Advance is able to meet the changing needs of the market and bring customers a real lead-time advantage in the acquisition and application of new technology as well as any new enhancements in raw materials sourced for the manufacturing process. The continuing expansion, enhancement and development of the Advance Anti-Slip product range ensures that Advance keeps abreast of the changing industry standards and market expectations.



## HOW TO ARRANGE A QUOTE OR PLACE AN ORDER

Simply complete an "Online Checklist and Request for Quotation/ Order Form" and return it to [sales@advanceantislip.com](mailto:sales@advanceantislip.com)

This form, and other product information is available from our website - [www.advanceantislip.com](http://www.advanceantislip.com)

The checklist is designed to support and assist you when considering specific product requirements and specifications.

Once this form is returned complete, we will confirm the information and proceed with either the order or quotation.

It is important to complete all details so we can expedite your order/ quotation.

## PRODUCT LEAD TIMES

In most cases, orders will be despatched to meet the customers request. Production lead times will depend on customer requirements, standard colours, standard grades and product configurations.

We recommend that you discuss any urgent delivery requirement with us so we can arrange to meet a specific delivery lead-time.

***This makes the investment in the Advance Anti-Slip range a long-term prospect.***

# PRODUCT INFORMATION

## DESCRIPTION

Advance Anti-Slip Surfaces' technology brings its customers antislip products designed to prevent slips, trips, stumbles, tumbles and falls on interior or exterior pedestrian areas where durable, robust, reliable, enduring non-slip surfaces are required.

The Advance Anti-Slip product range have a high solids, carborundum, heavy duty hardened resin nonslip surface adhered to a metal backing, which are manufactured for application in slippery or hazardous areas to provide firm footing, even after heavy spillage and soilage.

Advance Anti-Slip has developed products to be "that one step ahead" of the market and to take into account the company philosophy of providing the "Total Cost of Ownership Solution" for our customers.

With many years of experience in producing high quality antislip products and accumulating feedback from our diverse customer base, the Advance Anti-Slip team continue to improve production methods and design the product range to suite virtually every requirement.



## APPLICATIONS

Advance Anti-slip products come in a wide variety of sizes and can be installed on many surfaces including:

- Steel Mesh/Grille and grating
- Stairways and Stair Landings
- Steps/Stairs
- Ladder Rungs
- Machinery, plant and equipment
- Checker plate Workstations
- Wooden and Masonry Ramps
- Concrete Areas
- Walkways, platforms, gantries
- Any pedestrian access area

## CHEMICAL RESISTANCE

Advance Anti-Slip products are designed to provide optimum toughness, strength and corrosion resistance against:

- Acids & Alkalis
- Solvents & Detergents
- Oil, Grease & Hydraulic Fluids
- Alcohol
- Saltwater
- And is fire retardant in its cured state.

**Advance Anti-Slip Surfaces Pty Ltd is an Australian owned company. The Ideal Solution!**

# STAIR NOSINGS



**Advance Anti-Slip Stair Nosings are a Class One, ready to install, metal backed product with a durable antislip surface designed for application in slippery or hazardous areas to provide firm footing.**

Our Stair Nosings can be produced to suit any type of stair substrate, such as those being made from any of these products, Aluminium grating, Galvanised Steel grating, FRP mesh grating, checkerplate, concrete, composites or even timber.

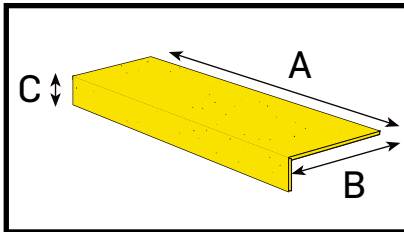
## STANDARD SIZE COMBINATIONS

Width (A)	+	Depth (B)	+	Return (C)
350 mm		50mm		10mm
450 mm		75 mm		20 mm
600 mm		150 mm		25 mm
750 mm		215 mm		
900 mm				
1200 mm				

*Custom sizes available, Made To Order*



## HOW TO MEASURE



High Visibility Colours Available



## METHOD OF INSTALLATION

**Over Grille:** Use universal clamp assembly.

**Over Steel-Aluminium-Masonry-Timber:** Use self-tapping screws, countersunk screws or rivets with a silicon sealer under the edges.

**Over Concrete:** Drive nails with a silicon sealer under the edges.

## PRODUCT FEATURES

- Provides secure footing on wet & oily surfaces.
- Highlights leading edge of step.
- High impact resistance.
- Excellent chemical & UV resistance.
- Pre-Drilled for simple installation.
- Long effective life.

### GRADES

BF = Barefoot	80
Fine = Fine	46
Ind = Industrial	24
HD = Heavy Duty	20
OS = Offshore	16

### COLOURS

SY = Safety Yellow	BL = Blue
BK = Black	RD = Red
BR = Brown	WH = White
GR = Green	NA = Nano-Green
GY = Grey	Oth = Other

### FOUNDATIONS

GL = Galvabond® 1.2mm
GL3 = Galvabond® 3.0mm
AL1.6 = 5052 Aluminium 1.6mm
AL3 = 5052 Aluminium 3.0mm
SS1.2 = 316 Stainless Steel 1.2mm
SS1.6 = 316 Stainless Steel 1.6mm

**Robust, durable, reliable. Designed to prevent accidents.**

# STAIR NOSINGS – 1428 RANGE

Advance Anti-Slip Surfaces Pty Ltd is leading the way with a range of stair nosings specifically designed to comply with the requirements of Australian Standard® AS1428.1 – 2009. Design for Access and Mobility.

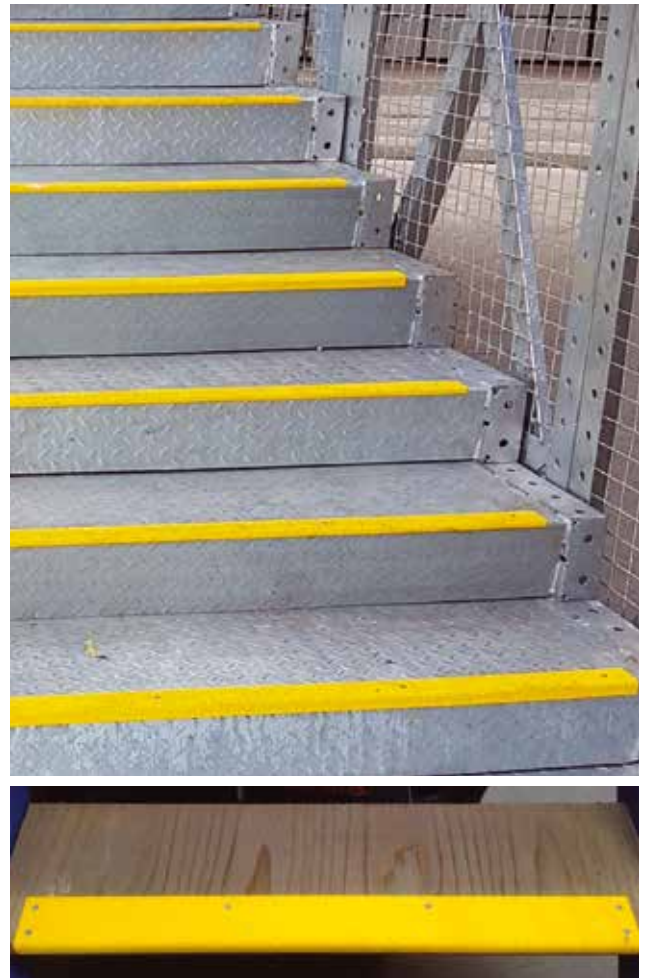
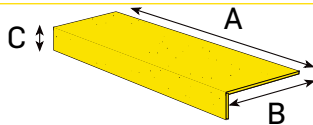
DIMENSIONS (mm)					PRODUCT CODE
A*	x	B*	x	C*	
600	x	50	x	10	SN6005010
750	x	50	x	10	SN7505010
900	x	50	x	10	SN9005010
1200	x	50	x	10	SN12005010
600	x	75	x	10	SN6007510
750	x	75	x	10	SN7507510
900	x	75	x	10	SN9007510
1200	x	75	x	10	SN12007510

## CUSTOM MADE SIZES AVAILABLE ON REQUEST

### Universal Clamp

### AASUNICLAMP

\* Stair nosing range complies with the width and depth requirements set out in Australian Standard AS1428.1 - 2009.



## SPECIFICATIONS

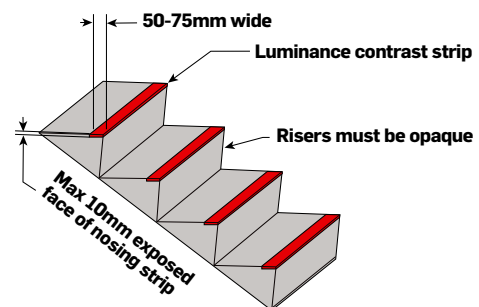
<b>QUALITY:</b>	Class One
<b>PROFILE:</b>	Single Bend
<b>GRADE:</b>	Heavy Duty – R13 (more grades available)
<b>FOUNDATION:</b>	Galvabond (more foundations available)
<b>COLOUR:</b>	Safety Yellow (more colours available)
<b>AGGREGATE:</b>	Silicone Carbide
<b>PRE-DRILLED HOLES:</b>	Available as required

Advance Anti-Slip products are designed to suit commercial and industrial applications. Testing completed is to AS 4586 - 2013 and is compliant to the Building Code of Australia (BCA) / National Construction Code (NCC).

Contrasting nosing strips are required to be not less than 50mm and not more than 75mm on the tread/ going and when located at the front edge of a stair cannot extend down the riser more than 10mm.

Stair nosing shall have a minimum luminance contrast of 30% to the background stairway.

A stairway is deemed to be two (or more) continuous steps.



**Our nonslip products all comply with national and international guidelines for quality, performance and safety.**



# LADDER RUNG COVERS



**Advance Anti-Slip Ladder Rung Covers with the Semi Circular or Rectangular bend are a Class One, ready to install, metal backed product with a durable antislip surface designed to provide firm footing on any type of ladder.**

Circular ladder rung covers snap fit to any type of round ladder rung. Easy to install with a sealant adhesive.

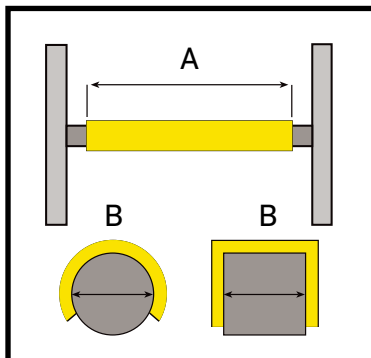
## STANDARD SIZES COMBINATIONS

Width (A)	+	Diameter of Rung (B)
250 mm		20 mm
300 mm		25 mm
350 mm		30 mm
400 mm		35 mm
450 mm		
500 mm		

*Custom sizes available, Made To Order*



## HOW TO MEASURE



High Visibility Colours Available



## METHOD OF INSTALLATION

Ensure the ladder rungs are free from all dirt, oil, grease and paint.

Apply 5mm of sealant adhesive to the inside of the ladder rung.

Snap fit to ladder rung.

## PRODUCT FEATURES

- Provides secure footing on wet & oily surfaces.
- High impact resistance.
- Excellent chemical & UV resistance.
- Long effective life.
- Easy to clean.

## GRADES

Fine = Fine	46
Ind = Industrial	24
HD = Heavy Duty	20
OS = Offshore	16

## COLOURS

SY = Safety Yellow	BL = Blue
BK = Black	RD = Red
BR = Brown	WH = White
GR = Green	NA = Nano-Green
GY = Grey	Oth = Other

## FOUNDATIONS

### Circular

CB = Colorbond®	.55mm
AL.8 = 5052 Aluminium	.8mm
SS.55 = 316 Stainless Steel	.55mm

### Square

GL = Galvabond®	1.2mm
AL1.6 = 5052 Aluminium	1.6mm
SS1.2 = 316 Stainless Steel	1.2mm

**Safe, permanent, effective. Improves asset integrity.**

# SAFEPLATES

**Advance Anti-Slip Safeplates are a Class One, ready to install, metal backed product with a robust antislip surface. Provides firm footing on wet or oily surfaces and is designed for application in slippery or hazardous areas.**

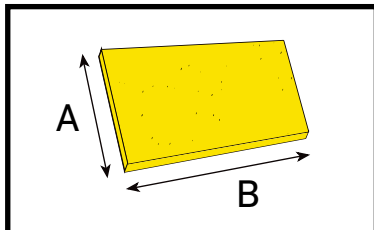
Safeplates can be produced to suit most situations where firm footing is required on walkway substrates such as those being made from any of these products, Aluminium grating, Galvanised Steel grating, FRP mesh grating, checkerplate, concrete, composites or even timber.

## STANDARD SIZES COMBINATIONS

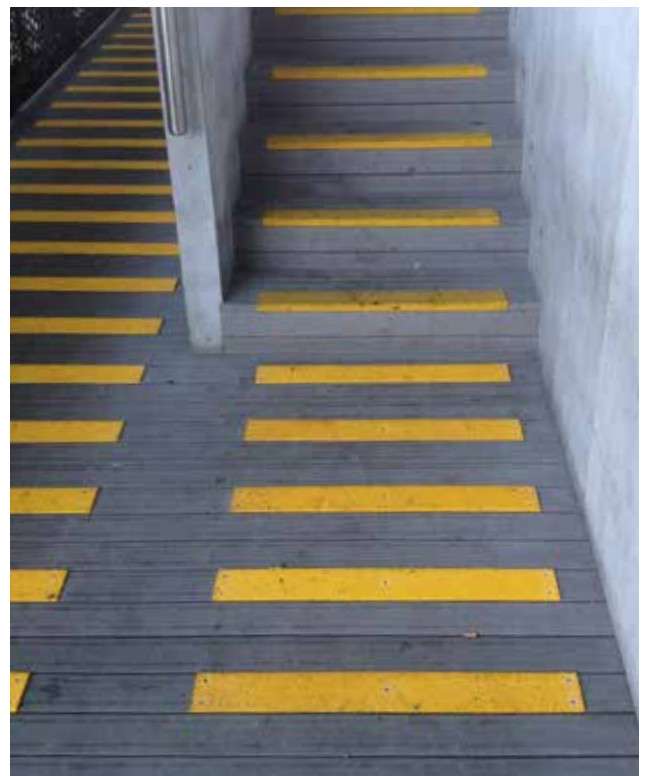
Width (A)	+	Depth (B)
200 mm		100 mm
400 mm		200 mm
600 mm		400 mm
750 mm		600 mm
900 mm		
1200 mm		

*Custom sizes available, Made To Order*

## HOW TO MEASURE



High Visibility Colours Available



## METHOD OF INSTALLATION

**Over Grille:** Use universal clamp assembly.

**Over Steel-Aluminium-Masonry-Timber:** Use self-tapping screws, countersunk screws or rivets with a silicon sealer under the edges.

**Over Concrete:** Drive nails with a silicon sealer under the edges.

## PRODUCT FEATURES

- Provides secure footing on wet & oily surfaces.
- High impact resistance.
- Excellent chemical & UV resistance.
- Pre-Drilled for simple installation.
- Long effective life.
- Easy to clean.

### GRADES

BF = Barefoot	80
Fine = Fine	46
Ind = Industrial	24
HD = Heavy Duty	20
OS = Offshore	16

### COLOURS

SY = Safety Yellow	BL = Blue
BK = Black	RD = Red
BR = Brown	WH = White
GR = Green	NA = Nano-Green
GY = Grey	Oth = Other

### FOUNDATIONS

GL = Galvabond® 1.2mm
GL3 = Galvabond® 3.0mm
AL1.6 = 5052 Aluminium 1.6mm
AL3 = 5052 Aluminium 3.0mm
SS1.2 = 316 Stainless Steel 1.2mm
SS1.6 = 316 Stainless Steel 1.6mm

***Provides secure footing, extremely hard wearing.***

# ANTISLIP TAPES



Advance Anti-Slip self-adhesive antislip tapes provide a robust slip resistant surface to help prevent slips, trips, stumbles, tumbles and falls.

The durable non-slip low-profile design enables light to medium pedestrian traffic to navigate stairways, steps, stairwells, landings, platforms, ramps, walkways and ladders freely, which helps in reducing slip hazards, incidents and injury.

Our non-slip tape range has applications on flat surfaces, entranceways, ramps, steps, ladders, forklifts, skateboards, construction machinery, plant equipment, marine vessels, transport vehicles and trailers, public transport vehicles, and many more surfaces where secure footing is required.

## BLACK ANTISLIP TAPE



TAPE WIDTH	ROLL LENGTH
25mm	5m & 18m
50mm	5m & 18m
100mm	5m & 18m
150mm	5m & 18m
200mm	5m & 18m
450mm	5m & 18m

## BLACK / YELLOW ANTISLIP TAPE



TAPE WIDTH	ROLL LENGTH
25mm	5m & 18m
50mm	5m & 18m
100mm	5m & 18m
150mm	18m
200mm	18m
450mm	18m

## YELLOW ANTISLIP TAPE



TAPE WIDTH	ROLL LENGTH
25mm	5m & 18m
50mm	5m & 18m
100mm	5m & 18m
150mm	18m
200mm	18m
450mm	18m



**“CAUTION” STRIP**  
Self Adhesive  
600mm x 150mm



**ANTISLIP STRIP**  
(Pack of 5)  
Self Adhesive  
300mm x 19mm

## LUMINOUS ANTISLIP TAPE



TAPE WIDTH	ROLL LENGTH
50mm	5m



**“WATCH YOUR STEP” STRIP**  
Self Adhesive  
600mm x 150mm

## PRODUCT FEATURES

- Durable grit surface to provide safe footing
- Adheres to smooth, clean, dry surfaces
- Available in sizes 25mm to 450mm
- Comes in different colours
- Australian Standard AS/NZS 4586:2004 compliant
- Temperature resistant from -5°C to 50°C
- Provides an instant non-slip surface.

## PRODUCT BENEFITS

- Quick and easy to install,
- Improve safety and performance in work areas
- A versatile economic solution,
- Helps prevent slips, trips, falls and accidents
- Use on steps, ladders, ramps, walkways, platforms, gangways, gantries, construction equipment, trailers, forklifts, boats, trains, buses, work vehicles and more
- Suitable for indoor and outdoor applications.

*Highly robust product to enhance personal safety.*

# GRATING TREAD STAIR NOSINGS

Advance Anti-Slip Surfaces manufacture a concise range of Class One, ready to install, metal backed antislip stair tread nosings specifically designed for mesh grating steps with a durable non-slip surface.

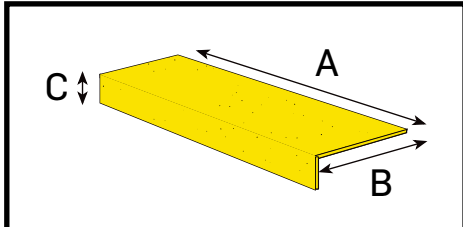
Grating Tread Antislip Stair Nosings come in two standard profiles of a single bend and double bend with a 20mm return (C) by 50mm in depth (B) and a width from 580mm to 1180mm long, that are intended to suit most pedestrian access step treads.

## STANDARD SIZE COMBINATIONS

WIDTH (A)	+	DEPTH (B)	+	RETURN (C)
580mm		50mm		20mm
730mm		50mm		20mm
880mm		50mm		20mm
1030mm		50mm		20mm
1180mm		50mm		20mm

*Custom sizes available, Made To Order*

## HOW TO MEASURE STAIR NOSING



## INSTALLATION GUIDE

Universal Clamp Assembly at regular intervals.

Pre-drilled holes come as standard.

If additional holes are required, mark the hole positions and drill through from the underside of the foundation.

Make sure there are sufficient holes to anchor the antislip stair tread nosings to the grating structure.



## PRODUCT FEATURES

- Provides secure footing
- Robust, durable, reliable
- Safety Yellow nosings highlights the steps leading edge
- Available in many colour options
- Pre-Drilled for simple installation
- Australian Standards compliant
- Backed by an extensive warranty
- Excellent impact, chemical & UV resistance
- Long effective life
- Easy to clean.

## AS 1657 – 2013 Section 3.1.3 Slip Resistance

Walking surfaces, including steps, treads and rungs, shall be slip resistant.

Notes: 2. Suitable test methods of slip resistance for pre-existing and new surfaces is given in AS 4586 and AS 4663.



## GRADES

HD = Heavy Duty 20

## COLOURS

SY = Safety Yellow

BK = Black

BR = Brown

GR = Green

GY = Grey

BL = Blue

RD = Red

WH = White

NA = Nano-Green

Oth = Other

## FOUNDATIONS

GL = Galvabond® 1.2mm

AL1.6 = 5052 Aluminium 1.6mm

SS1.2 = 316 Stainless Steel 1.2mm

**Cost-effectively strong, resilient and dependable.**

# GRATING ANTISLIP STRIPS & SAFEPLATES



Advance Anti-Slip Surfaces manufacture a concise range of Class One, ready to install, metal backed antislip Safeplates and Antislip Strips that are specifically designed for mesh grating walkways, ramps, landings and platforms to provide superior traction and a durable non-slip surface.

Antislip Strips come in standard profiles of 50mm in depth (B) and varied width (A), Antislip Safeplates come in standard profiles from 600mm to 1200mm in depth (B) and varied width (A), that are intended to suit most pedestrian access walkways, ramps, landings and platforms.



## STANDARD SIZE COMBINATIONS

### ANTISLIP STRIPS

Width (A)	+	Depth (B)
580mm		50mm
730mm		50mm
880mm		50mm
1030mm		50mm
1180mm		50mm

### ANTISLIP SAFEPLATES

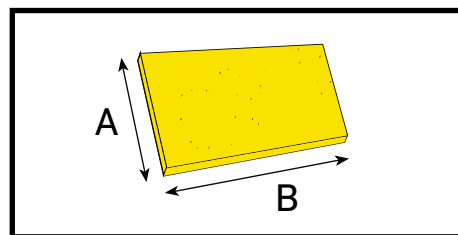
Width (A)	+	Depth (B)
600mm		600mm
600mm		1200mm
750mm		1200mm
900mm		1200mm
1200mm		1200mm

*Custom sizes available, Made To Order*

## PRODUCT FEATURES

- Provides secure footing on wet & oily surfaces
- Robust, durable, reliable
- Available in many colour options
- Pre-Drilled for simple installation
- Australian Standard 4586:2013 compliant
- Backed by Advance Anti-Slip's extensive warranty
- High impact resistance
- Excellent chemical & UV resistance
- Long effective life
- Easy to clean.

## HOW TO MEASURE SAFEPLATE



## GRADES

Ind = Industrial 24  
 HD = Heavy Duty 20  
 OS = Offshore 16

## COLOURS

SY = Safety Yellow  
 BK = Black  
 BR = Brown  
 GR = Green  
 GY = Grey  
 BL = Blue  
 RD = Red  
 WH = White  
 NA = Nano-Green  
 Oth = Other

## FOUNDATIONS

GL = Galvabond® 1.2mm  
 AL1.6 = 5052 Aluminium 1.6mm  
 SS1.2 = 316 Stainless Steel 1.2mm

**Durable, dependable, effective. Take the next step.**

# CONVEYOR CHANNEL CLEATS

Advance Anti-Slip Surfaces manufacture a concise range of Class One, ready to install, metal backed antislip Conveyor Channel Cleats with a durable non-slip surface designed to provide firm footing on any type of conveyor ramp or walkway, even with a sharp rising incline. Conveyor Channel Cleats come in a standard profile of 10mm high by 50mm in depth and a width from 450mm to 1200mm long, that are intended to suit most pedestrian access areas.

## STANDARD SIZES COMBINATIONS

WIDTH (A)	+	DEPTH (B)	+	RETURN (C)
580mm		50mm		10mm
730mm		50mm		10mm
880mm		50mm		10mm
1030mm		50mm		10mm
1180mm		50mm		10mm

*Custom sizes available, Made To Order*

## INSTALLATION GUIDE

Universal Clamp Assembly at regular intervals.

Pre-drilled holes come as standard.

If additional holes are required, mark the hole positions and drill through from the underside of the foundation.

Make sure there are sufficient holes to anchor the conveyor channel cleat to the grating structure.

## AS 1657 – 2013 Section 5.3.2 Slip Resistance

Slip resistance shall comply with clause 3.1.3

Where the angle of slope of the walking surface is between 10° and 20°, the surface shall have cleats fitted across the full length of the walking surface at 90° to the direction of travel.



## PRODUCT FEATURES

- Provides secure footing on wet & oily surfaces
- Robust, durable, reliable
- Available in many colour options.
- Pre-Drilled for simple installation.
- Australian Standard 4586:2013 compliant.
- Backed by Advance Anti-Slip's extensive warranty.
- High impact resistance.
- Excellent chemical & UV resistance.
- Long effective life.
- Easy to clean.



## AS 1657 – 2013 Section 5.3.3 Cleats

Cleats shall be of metal, not less than 10mm x 10mm and evenly spaced at the following intervals;

At slope angles >10° to 15° – 450mm

At slope angles >15° to 18° – 400mm

At slope angles <18° – 350mm

## GRADES

Ind = Industrial 24  
 HD = Heavy Duty 20  
 OS = Offshore 16

## COLOURS

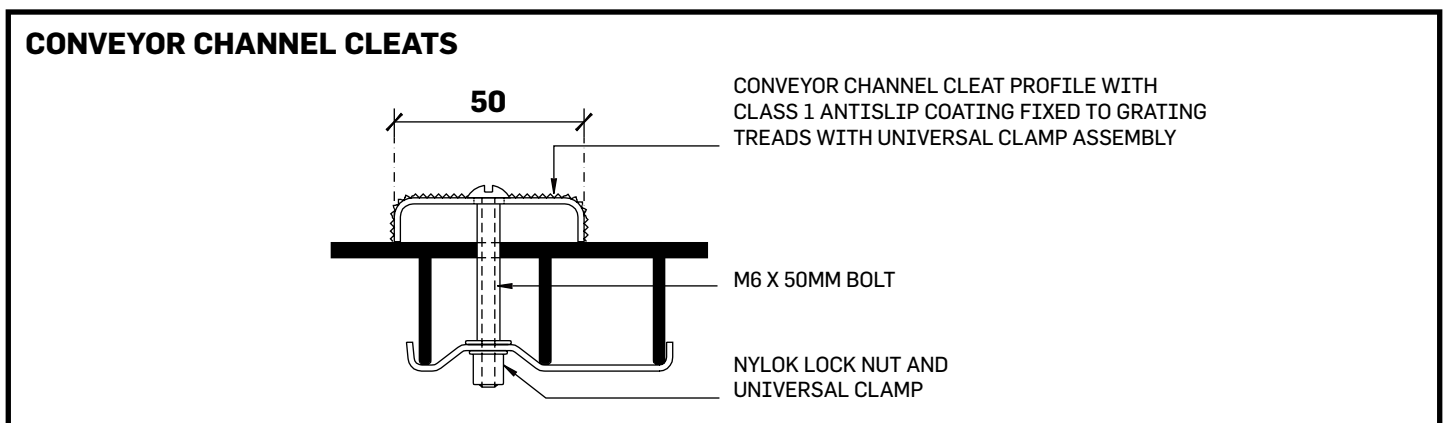
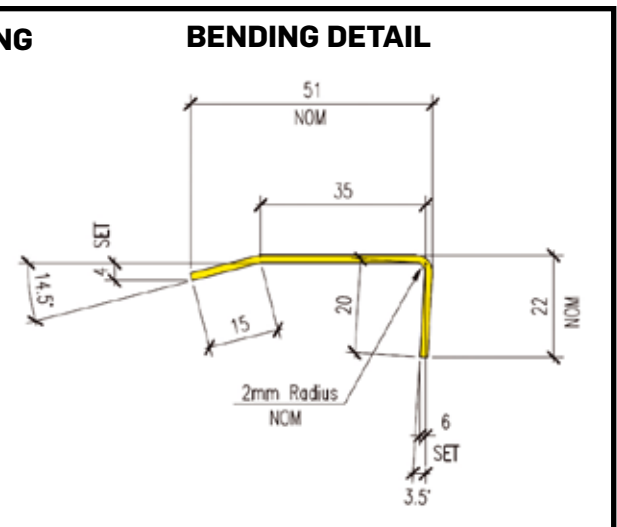
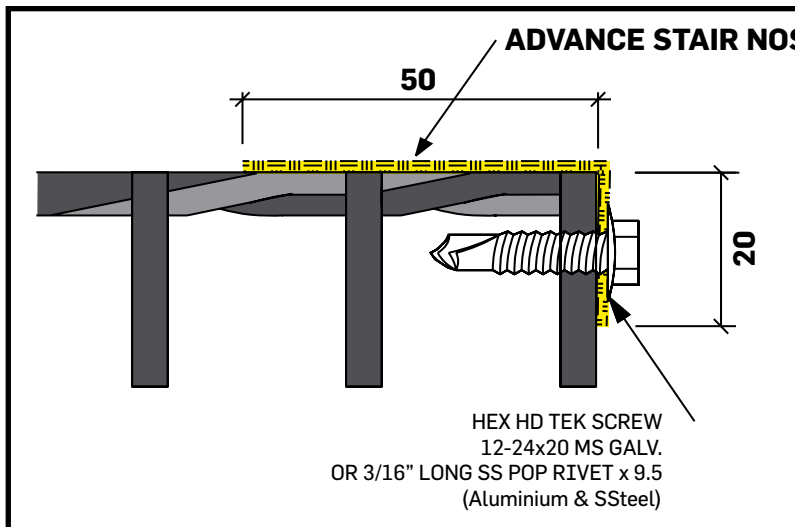
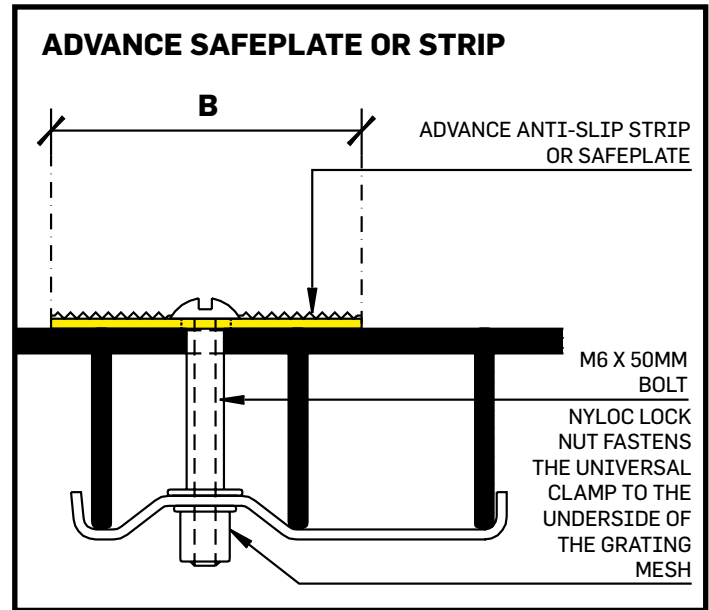
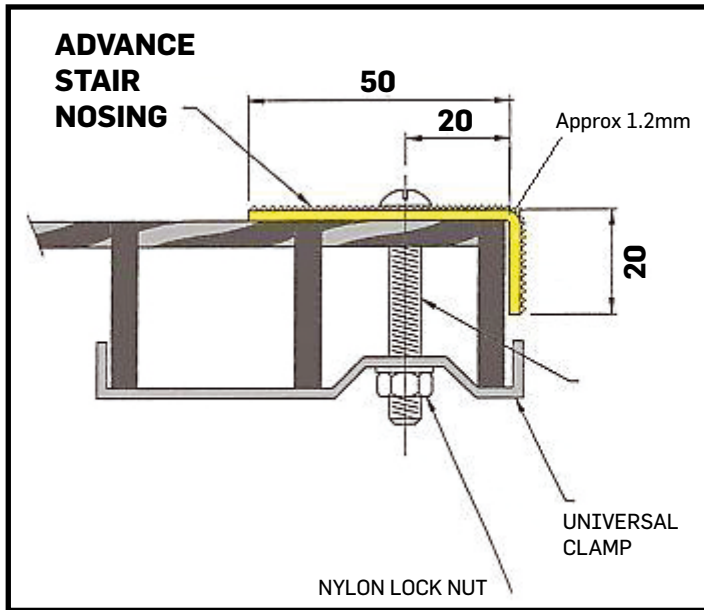
SY = Safety Yellow  
 BK = Black  
 BR = Brown  
 GR = Green  
 GY = Grey  
 BL = Blue  
 RD = Red  
 WH = White  
 NA = Nano-Green  
 Oth = Other

## FOUNDATIONS

GL = Galvabond® 1.2mm  
 AL1.6 = 5052 Aluminium 1.6mm  
 SS1.2 = 316 Stainless Steel 1.2mm

**Every step forward is a safe one.**

# STANDARD GRATING PRODUCT DESIGN



*Your best slip prevention defence against personal injury.*

# TECHNICAL SPECIFICATIONS

**Advance Anti-Slip Surfaces Stair Nosings, SafePlates and Ladder Rung Covers are a Class One, ready to install, metal backed product with a durable antislip surface designed to provide firm footing and eliminate slips, trips, stumbles, tumbles and falls in pedestrian access areas.**

## 1. STEEL FOUNDATION

The Advance Anti-Slip product range is a steel based product with either one of following types of steel used depending on the application and strength requirements.

### STAIR NOSING – SAFEPLATES

- GL = Galvabond® 1.2mm
- GL3 = Galvabond® 3.0mm
- AL1.6 = 5052 Aluminium 1.6mm
- AL3 = 5052 Aluminium 3.0mm
- SS1.2 = 316 Stainless Steel 1.2mm
- SS1.6 = 316 Stainless Steel 1.6mm

### STAIR NOSINGS



### SAFEPLATES



---

### LADDER COVERS

#### Circular

- CB = Colorbond® .55mm
- AL.8 = 5052 Aluminium .8mm
- SS.55 = 316 Stainless Steel .55mm

#### Square

- GL = Galvabond® 1.2mm
- AL1.6 = 5052 Aluminium 1.6mm
- SS1.2 = 316 Stainless Steel 1.2mm

### LADDER RUNG COVERS



---

1.2mm steel should constitute the minimum gauge to avoid excessive flexing of the antislip material, which could contribute to the antislip delaminating from the foundation. This gauge also offers satisfactory resistance to impact and requires less fixing points than thinner gauges.

## 2. FABRIC MEDIUM

- All layers hand laminated, not sprayed
- Cured at optimum temperature and humidity – no oven use
- Resistant to all solvents, petroleum products and acid solutions

If the high build resin is applied directly to the steel foundation the bond between them may initially be adequate. However, the surface will inevitably delaminate through either impact or thermal expansion differentials between the resin and the steel. By utilising a fabric medium “floating” on the steel foundation, delamination problems are eliminated, provided that the bonding system is adequate. Once attached, Advance Anti-Slip’s fabric is rolled onto the steel through a system of pinch rollers, which removes any trapped air and ensures maximum adhesion. When the first of the key coats of the resin is applied to the fabric, the fabric becomes an integral part of the resin system, dramatically increasing the tensile strength of the system while allowing for differentials in thermal expansion rates.

**Advance Anti-Slip – A new level of performance.**



### 3. RESIN SYSTEM

- All layers hand laminated, not sprayed
- Cured at optimum temperature and humidity – no oven use
- Resistant to all solvents, petroleum products and acid solutions

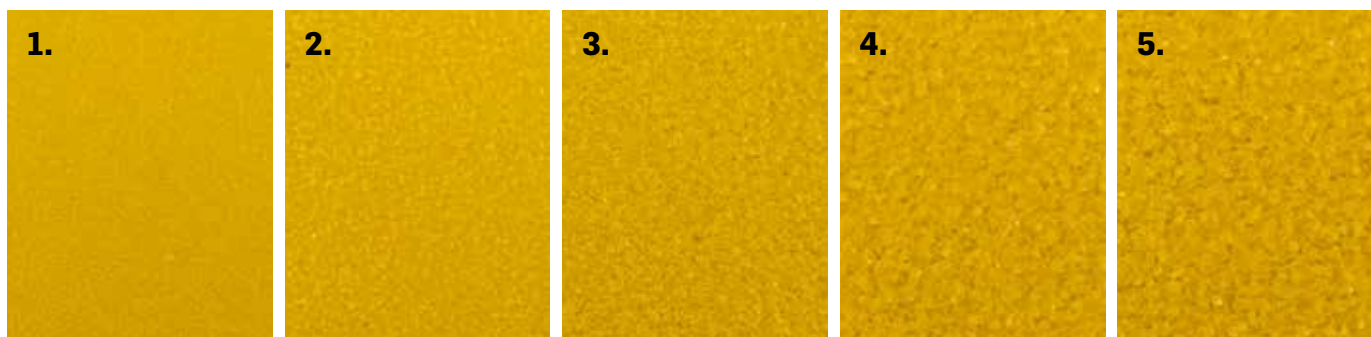
The resin system must be resistant to prolonged exposure to most chemicals, particularly solvents. The resin should also be solvent free otherwise standard petroleum products may dissolve the surface over time. All Advance Anti-Slip products are individually hand laminated and cured in a controlled environment with almost zero humidity and an ambient temperature of 25 degree Celsius.

If the resin is sprayed, uniformity and consistency will not be achieved. If the resin is cured at a temperature greater than 40 degrees Celsius more products may be produced per hour. However, styrene gas is created in the curing resin and will work its way to the surface. This has negative effects on the environment as styrene gas breaks down the earth's ozone layer and it may lead to pin holes, bubbles or a brittle resin system on the product.

### 4. AGGREGATE

Different manufactures have different names for each of their antislip materials. To ensure that the end user receives the required coarseness of material, the following comparisons of Advance Anti-Slip grading may be used. Sizes of Advance Anti-Slip aggregate are as follows:

	<b>Grade</b>	<b>ISO 86</b>	<b>Microns (range)</b>
1.	Barefoot	80	212 - 180
2.	Fine	46	425 - 355
3.	Industrial	24	850 - 710
4.	Heavy Duty	20	1180 - 1000
5.	Offshore	16	1400 - 1180



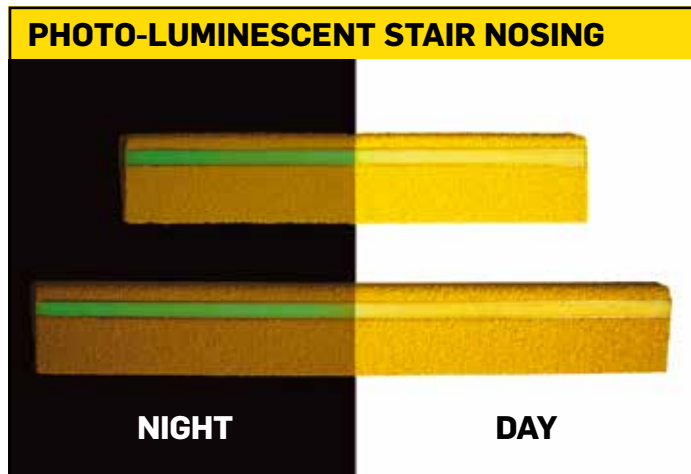
Before the final coat of resin is applied to the aggregate, the edges of all Advance Anti-Slip metal backed products are chipped to remove all excess aggregate and then all edges are sealed with the final pigmented coat of resin. If this is not done, the products edges are often chipped during transportation or installation, which leaves bare steel exposed on the edges.

# HIGHER VISIBILITY

**Advance Anti-Slip Surfaces produces a specific variety of custom-made Class 1, non-slip, metal backed, ready to install safety products designed to be highly visible to keep workers safe from slip, stumble, trip, tumble, falter and fall incidents.**

In our Australian manufacturing facility, we make antislip products for all types of pedestrian access safety requirements. From nosings for all types of stairs or steps, ladder rung covers for any type of access ladder, through to nonslip plates for any type of pedestrian walkway or access ramps for daytime or night time use.

Our complimentary colours of bright Safety Yellow, Higher Visibility Green and Safety Red highlights the leading edge of any step or stairway, ladder rung or walkway and provides a safe visible contrast to most pedestrian access areas.

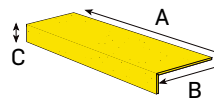


In addition, the photo-luminescent (Glow-in-the-Dark) range enables people to find their way out during a power outage in dark areas or where emergency egress is required.

## HIGHER VISIBILITY STAIR NOSINGS



### How to Measure Stair Nosings

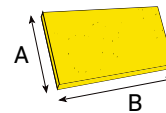


- Metal backed with a carborundum grit and hardened resin surface
- Higher Visibility Safety Yellow, Nano Green, Red
- Safe, Permanent, Effective
- Extremely hard wearing
- Easy to clean
- Australian Standards compliant
- Robust, Durable, Reliable
- Easy to install

## HIGHER VISIBILITY SAFEPLATES



### How to Measure Safeplates

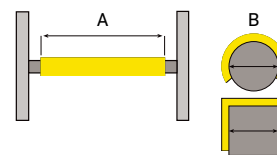


- Metal backed with a carborundum grit and hardened resin surface
- Higher Visibility Safety Yellow, Nano Green, Red
- Sturdy, Strong, resilient
- Easy to clean
- Australian Standards compliant
- Robust, chemical resistant, non-wearing
- Easy to install

## HIGHER VISIBILITY LADDER RUNG COVERS



### How to Measure Ladder Rung Covers



- Metal backed with a carborundum grit and hardened resin surface
- Higher Visibility Safety Yellow, Nano Green, Red
- Strong, Resilient, Dependable
- Provides Secure Footing on all ladder rungs
- Australian Standards compliant
- Non-wearing, Strong, Durable, Reliable
- Easy to install

**Don't leave pedestrian safety to chance!**

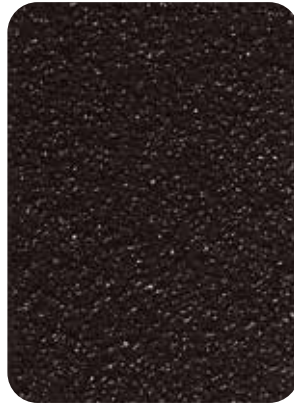
# COLOUR SELECTOR



The colours shown below are the standard colour range available for Advance Anti-Slip products:



Safety Yellow  
A.S. 2700 - Y26



Black  
A.S. 2700 - N61



NANO Green  
RAL 6018



Brown  
A.S. 2700 - X65



Green  
A.S. 2700 - G12



Grey  
A.S. 2700 - N35



Blue  
A.S. 2700 - B24



Red  
A.S. 2700 - R14



White  
A.S. 2700 - N14

*Computer screens are not able to display the exact colours as they appear on our products. Please use the colours on this flyer as a reference only. To be sure of selecting the correct colour, please visit one of our many resellers to view the colour samples selection ring.*

**Making pedestrian stairs, landings and walkways safe, accessible and resilient:  
Now and into the future.**

# CAPABILITY STATEMENT

## ABOUT US

Advance Anti-Slip Surfaces is the principal Australian owned manufacturer and supplier of a range of Class One metal backed antislip safety products and nonslip self-adhesive tapes.

These products are used primarily in the mining, petrochemical, construction, food, beverage and manufacturing industry, to solve problems relating to slips, trips, stumbles, tumbles and falls on stairs,

landings, platforms, ramps, walkways and ladders.

Our nonslip products comply with national and international compliance requirements for quality, performance and safety.

We consistently prove our commitment to all industry sectors by only producing the most cost-effective highest quality antislip products available, backed by an extensive warranty.

---

## DIFFERENTIATION

### Expertise:

- Design high quality, cost effective products
- Provide the best product solutions to meet our customer needs
- Our products reflect high quality and performance to Australian and International Standards

### Innovation:

- Advance Research & Development Centre
- Continually improve manufacturing processes
- Source the highest quality materials available

### Pricing:

- Provide a competitive pricing structure through lean manufacturing

---

## CORE COMPETENCIES

- Manufacture products designed to prevent accidents and injury
- Design products providing optimum toughness, strength and durability
- Develop leading edge products within the Advance Research and Development Centre
- Consult with customers to determine specific requirements
- Provide value add cost saving solutions

**Advance's products are recognised as the best, and most economical for maximum anti-slip properties. Very few products can so effectively eliminate or reduce the risks inherent on:**

• STAIRS • LADDERS • RAMPS • WALKWAYS • LANDINGS • PLATFORMS

***The No.1 Class One Metal Backed Antislip Product Producer***

# MISSION & QUALITY STATEMENT



## MISSION STATEMENT:

Improving people's safety through significant innovation.

---

## QUALITY POLICY STATEMENT:

Advance Anti-Slip Surfaces Pty Ltd provides superior quality Australian manufactured products and the supply of its antislip elements throughout the world. The Company has developed its expertise since its establishment in May 1990 and its aim is to achieve a continually high standard of product quality and service to its customers.

It is the policy of Advance Anti-Slip Surfaces to provide the customer with products and services to the agreed customer requirement in accordance with its offering of exceptional products, efficient service and economically delivered price.

Management and Staff are responsible for Quality Control through the Quality Management System seeking improvement by constant review, and with suppliers being encouraged to co-operate in the process. The Company is committed to achieving customer satisfaction by the use of quality procedures which will be operated to meet or exceed the requirements of ISO 9001.

---

## RESEARCH AND DEVELOPMENT

Advance Anti-Slip Surfaces is committed to continued Research and Development, Advance Anti-Slip is able to meet the changing needs of the market and bring customers a real cost saving and lead-time advantage in the acquisition and application of new technology as well as any new enhancements in raw materials sourced for the manufacturing process.

The continued expansion, enhancement and development of the Advance Anti-Slip Surfaces product range ensures that we keep abreast of the changing industry standards and market expectations.

All new product development must take into account the company philosophy of providing the "Total Cost of Ownership" solution.

***Our cost-effective products keep pedestrian safe, reduce stress and lowers operating costs.***

***Improve pedestrian safety through innovation.***

# WORK HEALTH & SAFETY (WHS) POLICY STATEMENT

Advance Anti-Slip Surfaces Pty Ltd is committed to ensuring the work, health and safety of its workers, contractors, visitors and other non-employees who may visit or be affected by our operation at Glen Waverley, Victoria. In securing workplace health and safety, the company promises to be diligent in their WHS practices and to fulfil all statutory responsibilities.

It is Advance Anti-Slip's policy that its employees shall be provided with a safe and healthy place in which to work, and that our work practices will not compromise the health or safety of others present at the workplace.

To achieve this policy Advance Anti-Slip Surfaces will implement a risk management approach to managing health and safety and make every effort, where reasonably practicable, to eliminate or minimise risks associated within the workplace and the work performed by its personnel. This will include giving important consideration to health and safety matters in all organisational plans, procedures, programs and job instructions.

---

## **Advance Anti-Slip Surfaces aims to prevent work health and safety incidents and injury by:**

- Maintaining safe working conditions,
- Using procedures designed to ensure the safety of our workers, contractors and visitors,
- Conscientiously observing all relevant Acts, Regulations, Guidelines and procedures,
- Managing identified risks and applying the principle of continuous improvement in safety.

## **The objectives of this policy are to, as far as reasonably practicable:**

- Achieve a safe and incident free workplace,
- Consider WHS in project planning and work activities,
- Involve employees in the decision-making process through regular communication and consultation,
- Ensure employees, contractors, visitors or non-employees are able to identify and control risks in the workplace,
- Monitor and review the elimination or control of potential risks,
- Enhance employees' WHS knowledge through a program of education and training.

## **The success of our WHS policy depends on:**

- The commitment of all stakeholders to achieving the policy objectives,
- Planning work activities, with due consideration given to WHS,
- Undertaking the risk management process in an effective manner,
- Communicate and consultation with our workers and non-employees.

Advance Anti-Slip Surfaces is dedicated to fulfilling the objectives of this policy and expect the same of all workers and non-employees connected to us, and ensuring that WHS related matters are effectively communicated to workers through a variety of avenues including, for example, noticeboards, staff meetings, e-mails etc.

***Sometimes the safest step you can take, is the one that's right in front of you.***

# ENVIRONMENTAL POLICY STATEMENT



Advance Anti-Slip Surfaces Pty Ltd is committed to reducing its impact on the environment. We will strive to improve our environmental performance over time and to initiate additional activities that will further reduce our impacts on the environment.

---

Our commitment to the environment extends to our customers, our staff, our suppliers and the community in which we operate. The goal is to promote sustainability and environmental awareness throughout the company and we are dedicated to:

- Comply with all applicable environmental regulations, legislation and sustainability obligations,
- Prevent pollution and reduce consumption of resources through waste management strategies that promote waste minimisation, re-use, recovery and recycling, whenever possible,
- Measuring and analysing the carbon footprint of our business activities in conjunction with other climate change mitigation efforts,
- Train all our staff on our environmental program and empower them to contribute and participate,
- Communicate our environmental commitment and efforts to our customers, employees, visitors and our community,
- Minimise pollution by taking appropriate steps to limit all emissions resulting from our manufacturing process,
- Where possible encourage our suppliers to meet high standards of environmental performance,
- Continually improve over time by striving to measure our environmental impacts and by setting goals to reduce these impacts and review them each year.

This Environmental Policy statement formalises our commitment to support the principles of environmental sustainability and recognises that a sustainable environment is central to our lives and our work for the future.

*Over 30 years experience in the  
Safe Surfaces Industry*

**DURABLE · ROBUST · RELIABLE**



**ADVANCE ANTI-SLIP SURFACES Pty. Ltd.**

6A Aristoc Road, Glen Waverley 3150, Victoria, Australia

**P:** +61 3 9560 4488 **F:** +61 3 9562 0449

**E:** [sales@advanceantislip.com](mailto:sales@advanceantislip.com)

**W:** [www.advanceantislip.com](http://www.advanceantislip.com)